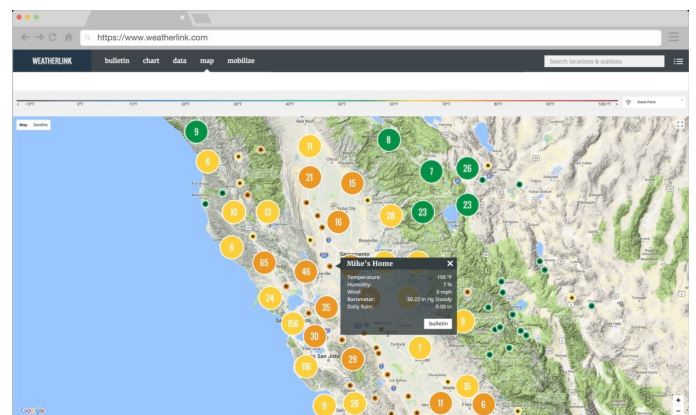
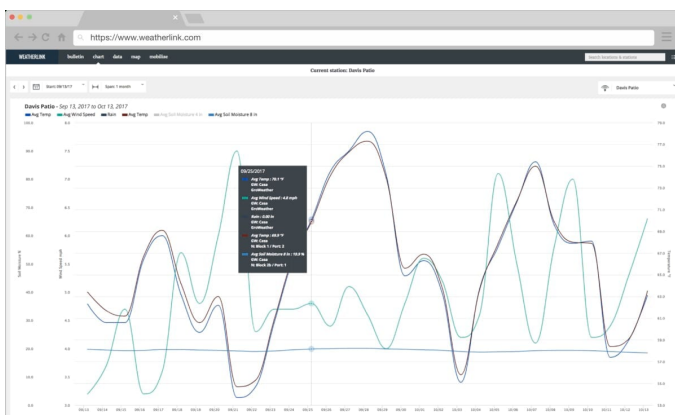
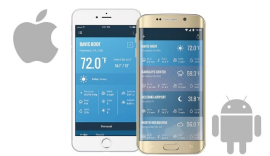


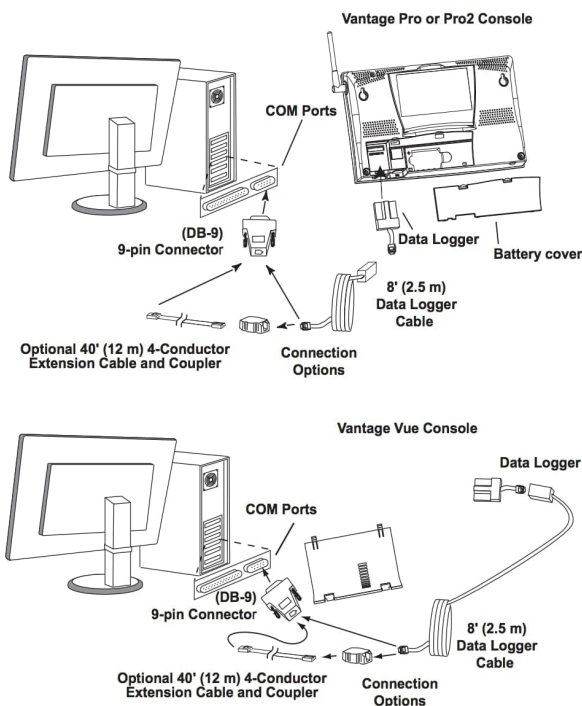


WeatherLink 2.0 Windows Software & Serial Port Data Logger

Product Images



The screenshot shows the WeatherLink website interface. At the top, there's a navigation bar with links like 'home', 'about', 'data', 'help', and 'mobile'. Below this, a header indicates 'Current station: Davis Station'. The main content area displays a table of weather data for 'Davis Station'. The table has columns for various weather parameters: Temp, High Temp, Low Temp, Hum, Dew Point, Wind Speed, Wind Direction, Wind Gust, High Wind Speed, High Wind Direction, Wind Chill, Rain Index, Total Index, Rainfall, Rain Rate, Solar Rad, Solar Energy, and Wind Energy. The data is organized into rows representing different time intervals, with a 'Date & Time' column on the left.



Short Description

WeatherLink 2.0 software and serial data logger for Vantage Pro2 and Vantage Vue Weather Stations. Access, store and graph your weather data. Add the serial Data Logger to your Vantage Vue/Vantage Pro2 console or Weather Envoy, and view data on your PC with WeatherLink Computer Software (included) or online at WeatherLink.com and WeatherLink Mobile Apps (iOS and Android).

Description

Access, store and graph your weather data with WeatherLink 2.0

Add the serial Data Logger to your Vantage Vue/Vantage Pro2 console or Weather Envoy, and view data on your PC with WeatherLink Computer Software (included) or online at WeatherLink.com and WeatherLink

Mobile Apps (iOS and Android).

The logger fits neatly into the weather station console or Envoy, storing weather data even when it's not connected to your PC.

Additional Options

Optional WeatherLink Cloud Pro Subscription (1 Year)	WeatherLink Pro
--	-----------------