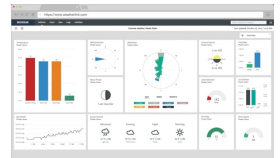
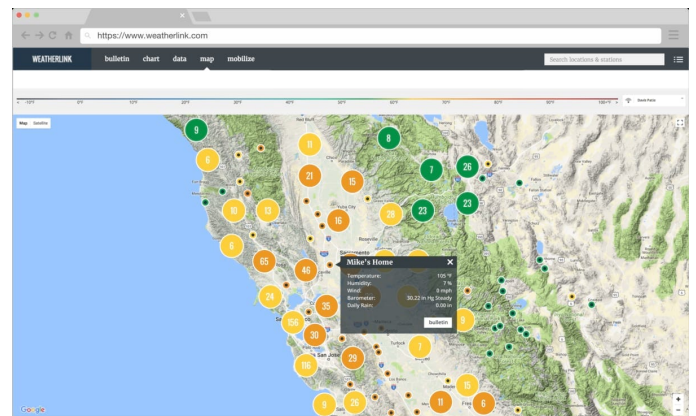
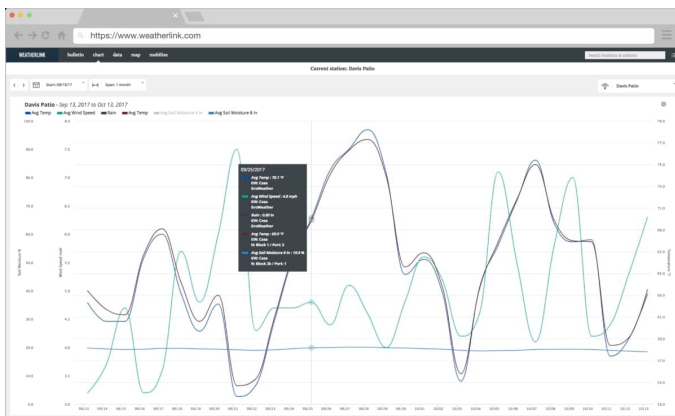
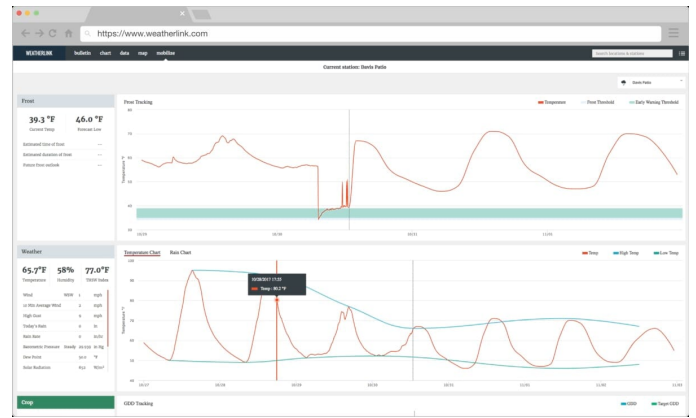




WeatherLink 2.0 Windows Software & USB Data Logger

Product Images





The screenshot shows the weatherlink.com website interface. At the top, there's a navigation bar with links: forecasts, charts, data, map, and monitor. Below this, the main heading is 'Current station: Davis Point'. A search bar on the right contains 'Davis Point'. The main content area is titled 'Davis Point' and features a 'forecast' tab. Below the tab, there's a table with 15 columns: Temp, High Temp, Low Temp, Humidity, Dew Point, Wind Speed, Wind Gusts, Wind Direction, Wind Run, High Wind Speed, High Wind Direction, Wind Gust, Wind Gusts, Wind Gust Direction, Humidity, Rain, Rain Run, Rain Rate, and Rain Delay. The table displays hourly forecast data for the next 15 hours. The first row shows a temperature of 65°F, high of 70°F, low of 55°F, humidity of 50%, dew point of 55°F, wind speed of 10 mph, wind gusts of 20 mph, wind direction of 100°, wind run of 100, high wind speed of 20 mph, high wind direction of 100°, wind gust of 20 mph, wind gusts of 20 mph, wind gust direction of 100°, humidity of 50%, rain of 0.00, rain run of 0.00, rain rate of 0.00, and rain delay of 0.00. The table continues with similar data for the next 14 hours, showing a general trend of increasing temperature and decreasing humidity.

Short Description

Access, store and graph your weather data with WeatherLink 2.0

Add the USB Data Logger to your Vantage Vue/Vantage Pro2 console or Weather Envoy, and view data on your PC with the WeatherLink Computer Software or online at WeatherLink.com and WeatherLink Mobile Apps (iOS and Android).

The logger fits neatly into the weather station console or Envoy, storing weather data even when it's not connected to your PC.

Description

Graph, Analyse and Store Your Data

View your data ON YOUR COMPUTER...

Simply plug the **WeatherLink Data Logger** into a wireless or cabled Vantage Pro2 or Vantage Vue console, or Weather Envoy. Download & install the **WeatherLink Computer Software** on your computer and start graphing, analysing and comparing your weather data.

Suitable for everyone from the home weather buff to the most demanding scientific user. Store weather data on your data logger even when it's not connected to a computer.

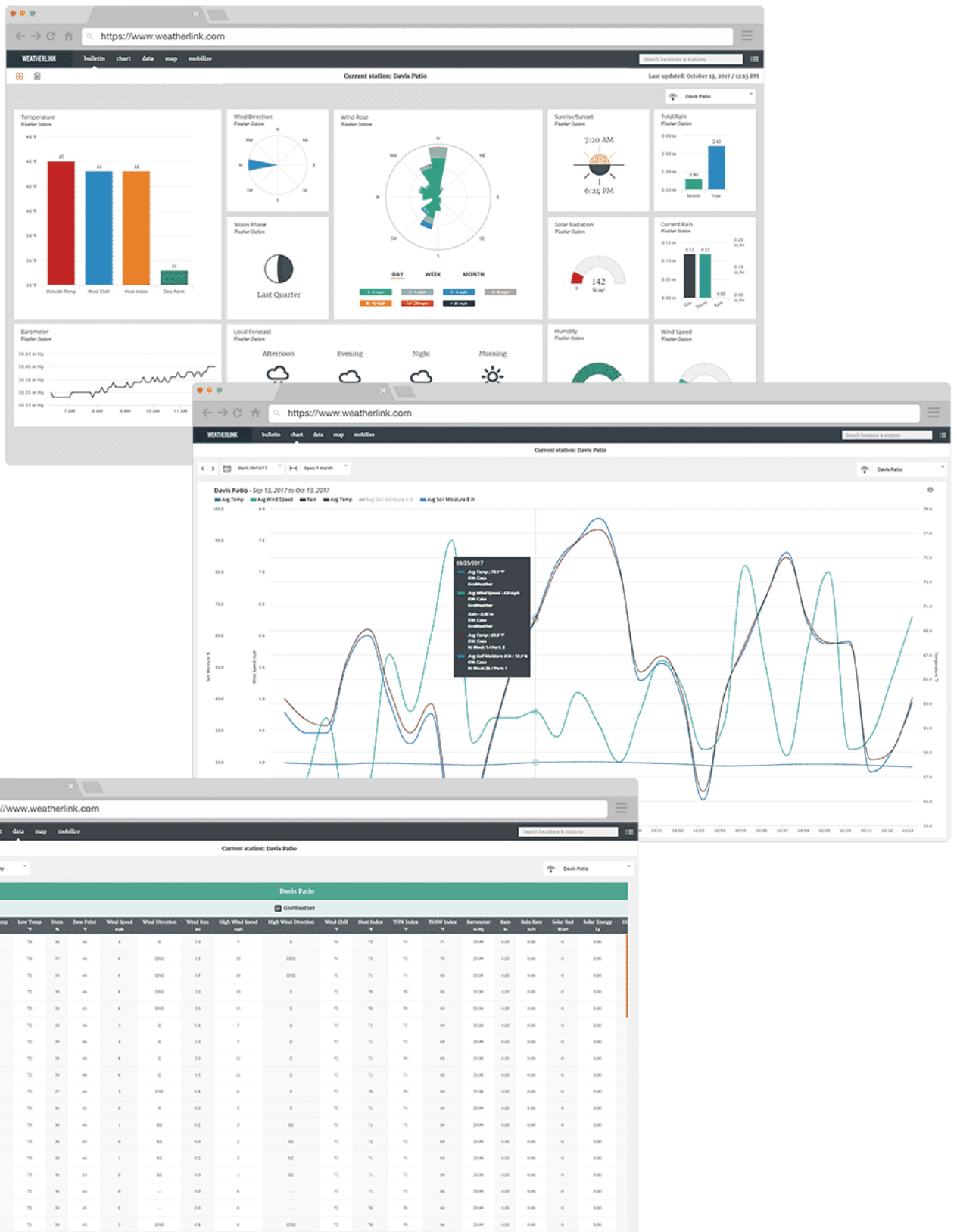
... or GO ONLINE!

Keep your internet access and computer turned on 24/7, and start viewing your data ANYWHERE and ANYTIME in any major browser at **WeatherLink.com** and on your mobile phone with the **WeatherLink Mobile App** for FREE!

Graph, Analyse and Store Your Data

Your personal WeatherLink.com page gives you current condition readings for – Temperature, Humidity, Barometer, Wind Speed, Current Rain, Wind Direction, Total Rain, Rain Rate, Solar Radiation, Wind Rose, Local Forecast, Sunrise/Sunset, Moon Phase.

With an optional **WeatherLink Pro** subscription, you can also store, read and graph your historical data.



Features

Bulletin with Current Conditions

Build and customise your bulletin dashboard to receive current data updates from all of your installed sensors. You can move and resize tiles to see the data just the way you like it.

Chart (requires Pro or Pro+ subscription)

Visualise any of your sensor data with custom line and bar charts on up to 4 different y-axes. Zoom into an hour of data or out to a full year to view details and trends.

Data (requires Pro or Pro+ subscription)

Access all of your raw sensor data at the click of a button. You can sort by date/time or data type and export any data set directly to an Excel-friendly .csv file.

Map

Use the WeatherLink Map to view and interact with the community of public stations in the worldwide WeatherLink Network. Click on a station to see a summary of current data and click the bulletin to see the station's customised weather dashboard.

Mobilize (requires Pro or Pro+ subscription)

Use the Davis Mobilize App on iOS or Android to create custom frost, weather, crop and irrigation views for web and mobile. It's powerful enough to help avoid losing your farm crop to frost, and fun for the data-savvy backyard gardener looking to perfect their tomato crop.

IPM (requires Pro+ subscription)

Access Integrated Pest Management (IPM) on Mobilize to link your weather and sensor data to actual pest risk, giving you a powerful new tool in protecting your crops from pest damage.

Data in Your Pocket

WeatherLink Mobile App brings your data and the Davis WeatherLink Network to your phone. Join the worldwide network of businesses, schools and hobbyists sharing their weather data with the world. WeatherLink lets you see your personal Davis Instruments weather station data and local forecasts, as well as explore other stations from around the world. Enjoy 7-day and hourly forecast, rain, barometer, solar radiation and many more.



Share Your Data

Upload

Upload your weather data to a growing list of third-party services including Weather Underground and CWOP

(Citizen Weather Observer Program).

Embed

Embed iframe code into your personal website, customise your email signature with your weather data, or use the full screen option to display current conditions on a TV in the office or for public display.

Station links

Want to share your station data with a friend or the broader community without requiring them to log in? Share the Summary link or the Device URL to securely share your personal weather data.

Allow access

Pro and Pro+ upgrades allow you to share your personal weather station data and to allow access to historical data, charting, and other advanced features.

Data Storage in Data Logger

Standard Data Logger allows you to log and store data in the data logger, even when it's not connected to your PC. Transfer the data as often as you like, or leave the PC and software running to transfer it automatically each day.

User-Selectable Storage Interval

You can choose 1, 5, 10, 15, 30, 60, or 120 minutes intervals and store up to six months worth of data on your Data Logger (depending on the storage interval).

Archive Storage Capacity

The amount of time before the archive on your Data Logger is completely filled:

1 Minute Archive Interval.	42 hours
5 Minute Archive Interval.	8 days
10 Minute Archive Interval.	17 days
15 Minute Archive Interval.	26 days
30 Minute Archive Interval.	53 days
60 Minute Archive Interval.	106 days
120 Minute Archive Interval.	213 days

Get Your Data to the Cloud

Requirements:

- PC turned-on 24/7
- WeatherLink Computer Software (included in the package) turned-on 24/7

- Internet access
- WeatherLink.com Account

WeatherLink Cloud stores 4x the amount of data your Data Logger can keep.

Data Updates:

- Your current conditions (Bulletin tab) are updated every 60 seconds.
- Your archive data (Data, Chart, Mobilize tabs) are uploaded to the server once an hour.
(Example: WeatherLink USB Data Logger with 15-min interval setup will send up data every hour with 4 sets of readings. While a 30-min interval setup will be sent every hour with 2 sets of readings.)

Download Your Data from WeatherLink Cloud

- A feature built in your WeatherLink Computer Software allows you to download your data from the WeatherLink Cloud to your computer. Simply click on File > Download in your software.
- WeatherLink Cloud makes 4x the amount of data on your Data Logger available to you for download.
- You can download all your data as long as you do it periodically.

Please check the table below to determine how often you should download your data from the cloud to your computer to keep it all.

1 Minute Archive Interval	7 days
5 Minute Archive Interval	32 days
10 Minute Archive Interval	68 days
15 Minute Archive Interval	104 days
30 Minute Archive Interval	212 days
60 Minute Archive Interval	424 days
120 Minute Archive Interval	852 days

Note that once your account capacity is reached, your data will get overwritten.

You can also download your data without the use of WeatherLink Computer Software in an **easily-readable .csv format** anytime from any computer with the use of any major browser with the 'Data' feature available in the paid **Pro Tier plan**.

Functional Specifications

- **Power:** 5VDC from console, 0.5 watts maximum consumption
- **Operating Temperature:** +14° to 140° F (-10° to 60° C)
- **Compatible with:** Vantage Pro2, Vantage Vue, Weather Envoy, and Envoy8X

Additional Information

Brand	Davis Instruments
Contents	The package includes: Data logger, Download cable to connect the data logger to your computer, Getting Started Guide and Online Help
Ideal For	Professional, Education, Amateur, Interested, Gardeners, Agronomy

Additional Options

Optional WeatherLink Cloud Pro Subscription	WeatherLink Pro (1 Year Subscription)
	WeatherLink Pro (3 Year Subscription)