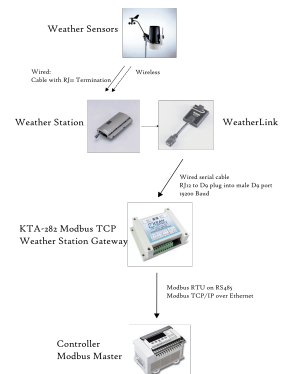
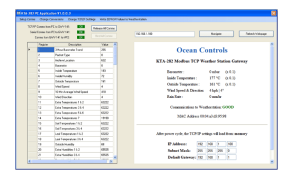




# Modbus TCP Weather Station Gateway

## Product Images



## Short Description

This gateway allows you to easily connect your PLC (Programmable Logic Controller), RTU (Remote Telemetry Unit) or SCADA (Supervisory Control And Data Acquisition) System to a Davis weather station.

## Description

The gateway allows you to easily connect your PLC (Programmable Logic Controller), RTU (Remote Telemetry Unit) or SCADA (Supervisory Control And Data Acquisition) System to one of the following Davis weather stations:

- 6152 Cabled Vantage Pro 2
- 6162 Cabled Vantage Pro 2 Plus

- 6152 Wireless Vantage Pro 2
- 6162 Wireless Vantage Pro 2 Plus
- 6153 Wireless Vantage Pro 2 Fan Aspirated
- 6163 Wireless Vantage Pro 2 Plus Fan Aspirated
- 6316 Wireless Weather Envoy (with Wireless ISS, ISS Plus, ISS Solar Fan Aspirated or ISS Plus Solar Fan Aspirated)
- 6250 Vantage Vue

The gateway plugs into the weather station's console using the Davis WeatherLink cable (Weather Link for Vantage Pro Serial) and appears on the Modbus network as a Modbus TCP/IP or RTU slave. This allows your programmable controller to monitor and carry out actions based on wind speed, wind direction, temperature, etc.

## Additional Information

Brand	Ocean Controls
Explanation	<ul style="list-style-type: none"> <li>• Two Open Collector outputs for alarms or control</li> <li>• Connects to a Modbus TCP/IP network via Ethernet. Can be polled by up to three Modbus masters simultaneously</li> <li>• Provides a webpage whereby TCP/IP settings can be easily configured. Also shows current settings, weather data, and communications statuses</li> <li>• Also supports Modbus RTU over RS-485.</li> <li>• Supports the new LOOP 2 command. This provides an additional 16 packets of previously unavailable weather data.</li> <li>• Can directly write the internal memory of the weather station, allowing configuration values to be changed (commonly latitude, longitude, elevation, timezone, etc)</li> <li>• Allows interrogation over HTTP to return any Modbus register values in XML format. Make your own custom application using the weather data</li> <li>• Dimensions: 115 × 90 × 40 mm</li> <li>• 8 to 28V DC powered; 100mA</li> </ul>
Installation	The unit can be screwed to a panel, or mounted to DIN rail.

## Additional Options

<b>Davis Serial Interface</b>	WeatherLink 2.0 Windows Software & Serial Port Data Logger
-------------------------------	--