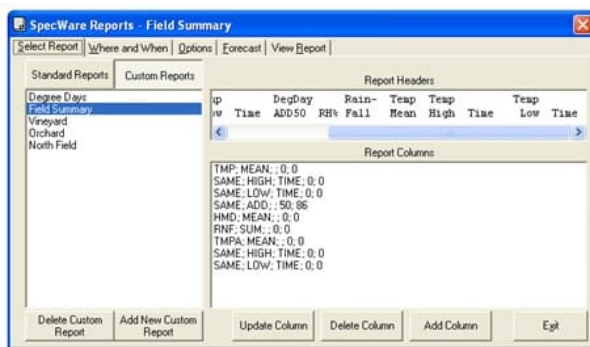


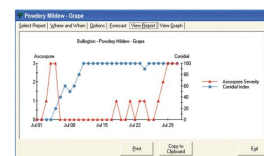


# SpecWare Potato Disease and Insect Alert Software

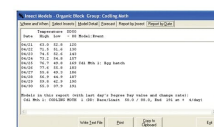
## Product Images



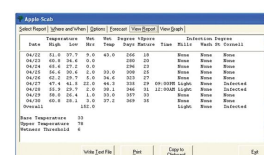
Custom Reports



Primary Mithras report for grapes



Cooling Mithras report



The screenshot shows the 'Apple Scale' window. It displays a table with columns: 'Date', 'High', 'Low', 'Temp', 'Humidity', 'Wind Speed', 'Wind Direction', 'Sunlight', 'Cloud Cover', 'Dew Point', 'Frost Risk', 'Rain Risk', 'Insect Risk', 'Disease Risk'. The table lists data for various crops including 'Apples', 'Pears', 'Plums', 'Cherries', 'Strawberries', 'Raspberries', 'Blackberries', 'Blueberries', 'Currants', 'Gooseberries', 'Elderberries', 'Huckleberries'.

Apple Scale Report

## Short Description

Become more proactive in your management of disease and insects by adding a disease and insect forecast module to your Spec 9 Pro software

## Description

Become more proactive in your management of disease and insects by adding a disease and insect forecast

module to your Spectrum [SpecWare 9 Pro](#) software.

- Save money by spraying only when necessary
- Quickly produce the documentation needed to support your IPM decisions
- Each package uses field-tested and validated algorithms along with your data to forecast the potential for the appearance of your crop’s most notorious enemies.

### Additional Information

Brand	Spectrum Technologies
Explanation	Required Sensors: Temperature, relative humidity and rain  Models Included: Early Blight Late Blight (BliteCast) Insect Models. For further information, see the User Guide under the Resources tab.
Ideal For	Agronomy