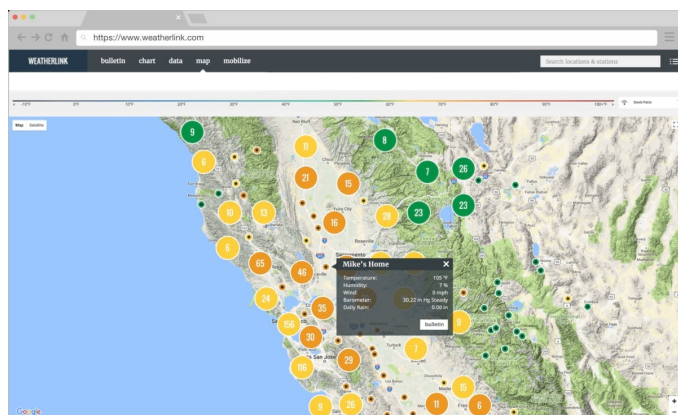
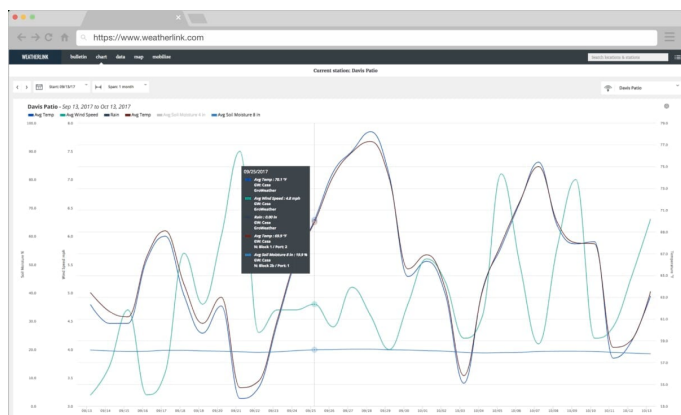
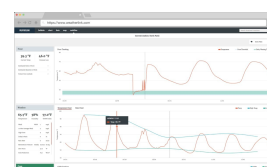
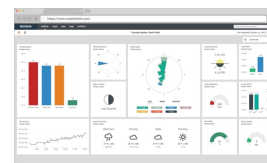
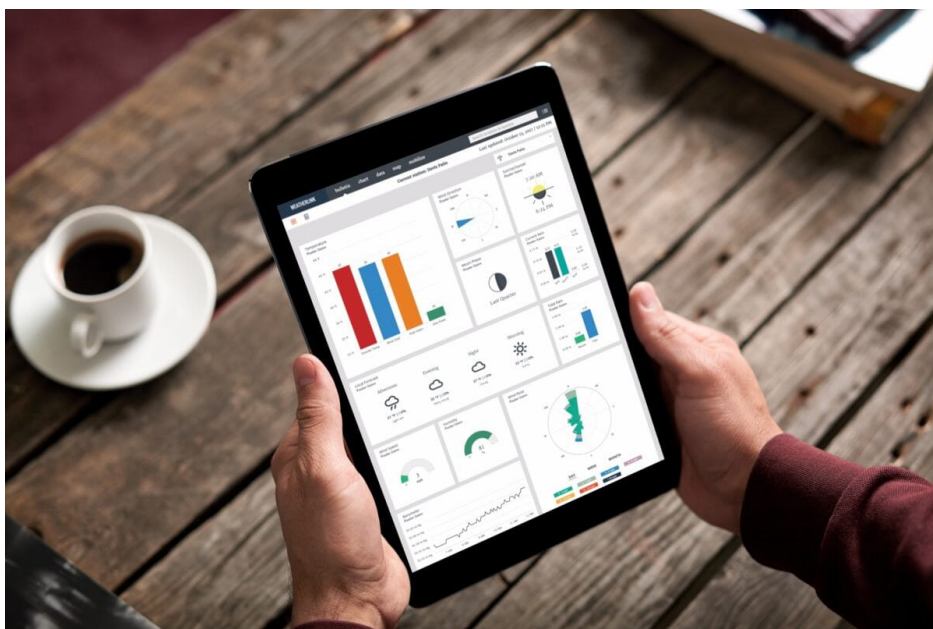




WeatherLink Pro (1 Year Subscription) - Your Current AND Historical Weather Data Online

Product Images



Short Description

Access, store and graph your current and historical weather data. View data on your online at WeatherLink.com and WeatherLink Mobile Apps (iOS and Android).

Description

With WeatherLink Pro, you can store, read and graph your historical data ANYWHERE and ANYTIME on any major browser.

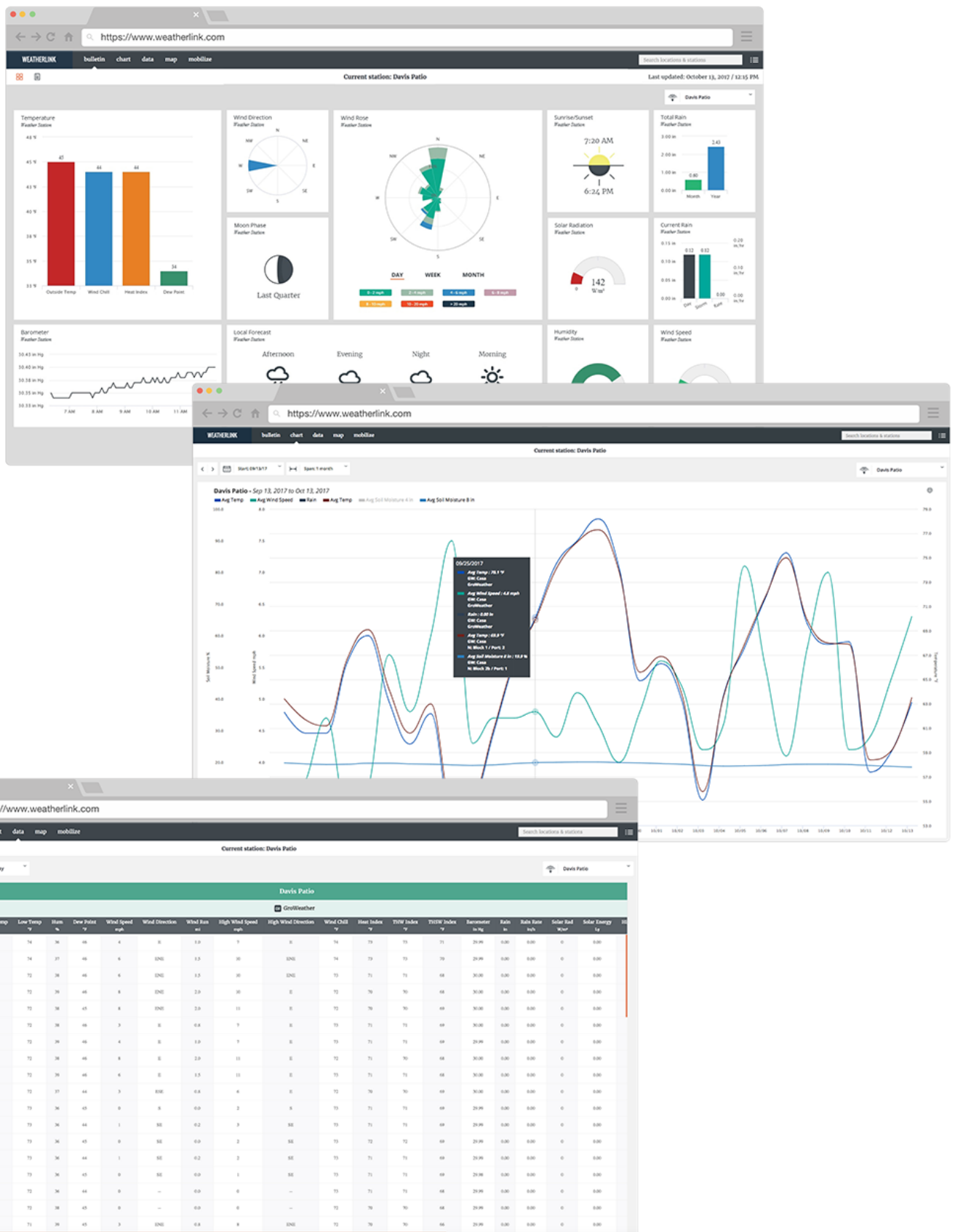
Data in Your Pocket

The free WeatherLink Mobile App brings your data and the Davis WeatherLink Network to your phone. Join the worldwide network of businesses, schools and hobbyists sharing their weather data with the world. WeatherLink lets you see your personal Davis Instruments weather station data and local forecasts, as well as explore other stations from around the world. Enjoy 7-day and hourly forecast, rain, barometer, solar radiation and many more.



WeatherLink.com: Your Data, Your Way

With your free WeatherLink.com account, build a custom weather dashboard of your current conditions, and/or explore public station data from around the world. With WeatherLink Pro, you can also analyse historical data in charts and data exports.



Bulletin with Current Conditions

Build and customise your bulletin dashboard to receive current data updates from all of your installed sensors. You can move and resize tiles to see the data just the way you like it.

Alarms

Set up customised email and text alerts with the most comprehensive alarm platform available for personal weather

stations.

Map View

Use the WeatherLink Map to view and interact with the community of public stations in the worldwide WeatherLink Network. Click on a station to see a summary of current data and click the bulletin to see the station’s customised weather dashboard.

Allow Access

Pro and Pro+ upgrades allow you to share your historical data, for charting, and other advanced features.

Embed

Embed iframe code into your personal website, customize your email signature with your weather data, or use the full screen option to display current conditions on a TV in the office or for public display.

Upload

Upload your weather data to a growing list of third-party services including Weather Underground and CWOP (Citizen Weather Observer Program).

Station Links

Want to share your station data with a friend or the broader community without requiring them to log in? Share the Summary link or the Device URL to securely share your personal weather data.

Chart (requires Pro or Pro+ subscription)

Visualise any of your sensor data with custom line and bar charts on up to 4 different y-axes. Zoom into an hour of data or out to a full year to view details and trends.

Data (requires Pro or Pro+ subscription)

Access all of your raw sensor data at the click of a button. You can sort by date/time or data type and export any data set directly to an Excel-friendly .csv file.

Mobilize App (requires Pro or Pro+ subscription)

Use the Davis Mobilize App on iOS or Android to create custom frost, weather, crop and irrigation views for web and mobile. It’s powerful enough to help avoid losing your farm crop to frost, and fun for the data-savvy backyard gardener looking to perfect their tomato crop.

IPM (requires Pro+ subscription)

Access Integrated Pest Management (IPM) on Mobilize to link your weather and sensor data to actual pest risk, giving you a powerful new tool in protecting your crops from pest damage.

Developer Resources

WeatherLink's powerful API allows local and remote access to weather station data.

Additional Information

Brand	Davis Instruments
-------	-------------------

Additional Options

Optional WeatherLink - Access Your Weather Data Online/PC/Mobile App	WeatherLink Console - touchscreen, no PC or WiFi required.
	WeatherLink Live - no PC required.
	WeatherLink Windows USB. Bundle price
	WeatherLink Windows Serial. Bundle price
Add weather related accessories	Weather Observers Handbook