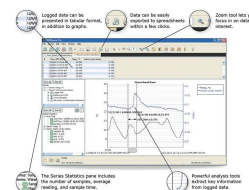
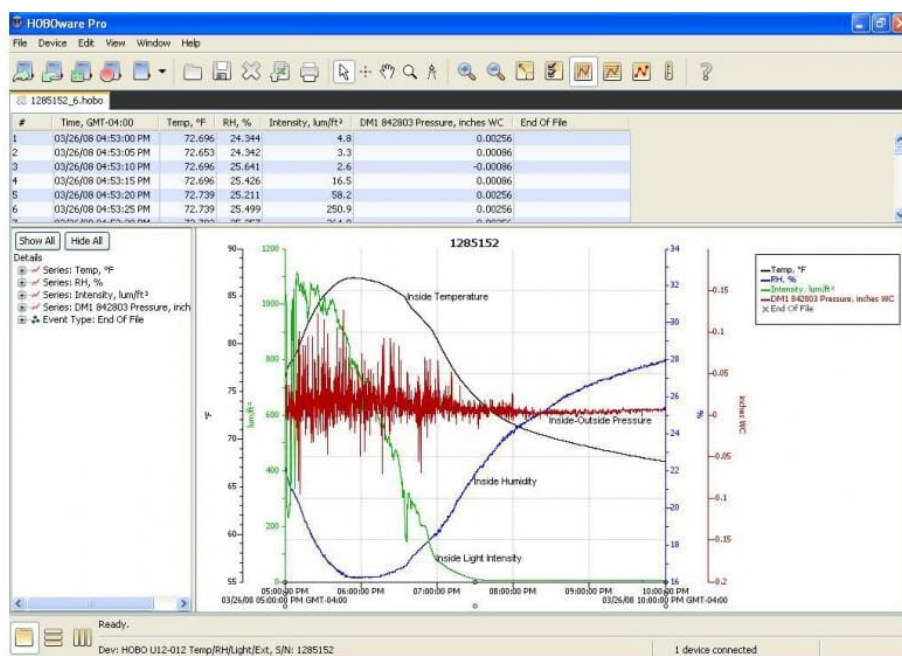




HOBOWare Pro Software - Download Only (Windows and MAC)

Product Images



Short Description

HOBOWare® data logging software lets you view, graph and analyse data with point-and-click simplicity.

Description

HOBOWare® data logging software lets you view, graph and analyse data with point-and-click simplicity.

Plot or export data to spreadsheets to conduct analysis necessary for your project. HOBOWare® Pro is easy to set up and its intuitive, point-and-click interface makes it simple to run. This data logging application is

compatible with all HOBO data loggers and wireless data nodes.

From setup to analysis, no other data logger software can compare to the power and simplicity of HOBOWare Pro.

HOBOWare Pro Key Features

- Powerful software for logger management, data graphing, data analysis, and data export
- Data Assistants and Real-Time Alarm Plug-ins provide advance data analysis, monitoring and notifications
- Mac and Windows compatible (see system requirements on technical Data tab)
- Multi-Language Support (English / Spanish / French / German / Polish / Portuguese / Japanese / Korean / Simplified Chinese / Traditional Chinese).

Notes:

A USB cable is NOT included with BHW-PRO-DLD. You will need a standard A/M to Mini B/M USB cable for transferring data from loggers to your PC/Mac. These are widely available, or you may purchase CABLE-USBMB.

HOBOWare data logger software must be purchased one license per computer.

HOBOWare Pro is non-refundable upon receipt of software license key.

HOBOWare features comparison		HOBOWare	HOBOWare Pro	
Explanation	Support for all HOBO data loggers *	✓	✓	
	Quickly generate presentation-quality graphs	✓	✓	
	Copy & paste series	✓	✓	
	Merge data files	✓	✓	
	Save modified graphs as projects	✓	✓	
	Easy data export to XLS, CSV & TXT files	✓	✓	
	Linear & pulse scaling data assistants	✓	✓	
	Multi-Language Support (English/Spanish/French/German/Portuguese/Japanese/Simplified Chinese/Traditional Chinese/Korean)	✓	✓	
	Time-saving tools for fast setup, readout & export		✓	
	Data Assistants for Dissolved Oxygen, Conductivity, Water Level, Growing Degree Days, Grains per Pound & kWh		✓	
	Ability to create Pie Charts		✓	
	Crop a series to a specific time frame		✓	
	Subset Statistics Tool for details within a time frame		✓	
	<u>21 CFR Part 11 Compliance</u>		✓	
	Data Shuttle support		✓	
	HOBOnode Manager to support ZW Data Nodes		✓	
	*CX, MX, and other BLE loggers require iOS or Android mobile devices and HOBOMobile or InTemp software, available free from the Android or Apple app stores. Certain loggers (U20s, U24's, U26's) require data assistants (only available in HOBOWare Pro) to provide the most accurate data.			
System Requirements:				
• HOBOWare is not certified to run on Enterprise versions of any version of Windows and is not certified to run on Server versions of Windows. It is certified to run on Windows 7 (Pro, Ultimate and Home Premium), 8 and 8.1 (Core, Pro) and 10 (Home, Pro).				
• HOBOWare Is certified to run on macOS 10.14 (Mojave), 10.15 (Catalina), and 11 (Big Sur).				
• HOBOWare no longer needs a Java Runtime Environment on your computer. We include the JRE in HOBOWare itself.				
	High End	Mid Range	Low End	Lowest End
CPU	2.9 GHz dual core	2.0 GHz dual core	1.8 GHz single core	1.8 GHz single core
RAM	3 GB	2 GB	1.5 GB	1 GB
Disk Space * see note	100 GB+	50 GB+	20 GB+	300 MB
User Model	4	3	2	1
The User Model row suggests some guidelines for using the Processor Speed and Memory table:				
User Model 1 - Using HOBO Data loggers only, no data nodes - traditional desktop user				
User Model 2 - Using HOBO Data loggers and up to 5 data nodes, 20 sensors				
User Model 3 - Using HOBO Data loggers and up to 50 data nodes, 100 sensors				
User Model 4 - Using HOBO Data loggers and up to 100 data nodes, 200 sensors				
* Disk Space - Defining the disk space requirements for HOBOWare depends on the proposed use. The table above describes the disk space needed for a traditional desktop user, allowing for installation of the program and storage of data files. For users of HOBO data nodes, the space requirements depend on a variety of factors, including the number of nodes, the number of sensors, the frequency of data sampling, the longevity of deployments, and other HOBO factors.				
Brand				