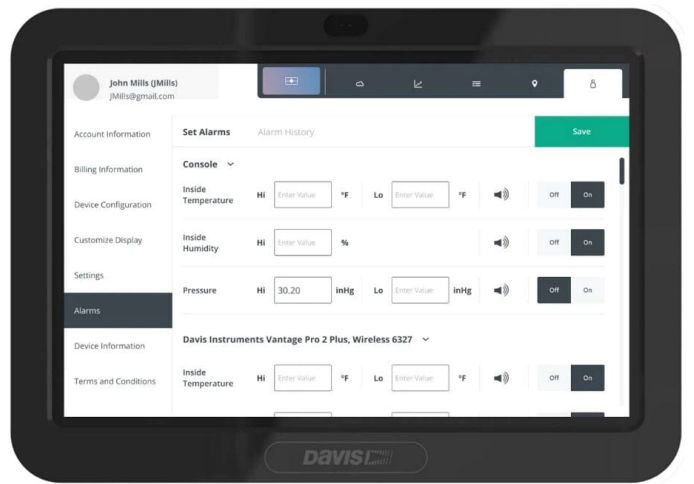




Davis Wireless Vantage Vue Weather Station with WeatherLink Console 6242UK

Product Images







Short Description

The Davis 6242 is a self-contained, easy-to-install system that includes Davis Vantage Vue solar-powered outdoor sensor suite and WeatherLink Console.

View your live weather data on the WeatherLink Console's interactive touchscreen display, stream over Wi-Fi and view on the WeatherLink smartphone app, or online at WeatherLink.com.

Description

The Davis 6242UK has replaced the now discontinued Davis 6120UK.

Because we are an authorised Davis Service Centre, we provide a FREE THREE YEAR WARRANTY on all Davis products purchased from us.

Step up to professional quality; Davis Vantage Vue 6242 wireless solar-powered weather station provides accurate, reliable weather monitoring in a self-contained, easy-to-install system. You'll see indoor and outdoor temperature and humidity, barometric pressure, wind speed and direction, dew point and rainfall. You'll also get weather forecast icons, moon phase, sunrise/sunset times, graphing of weather trends, alarms and more.

The one-piece outdoor sensor suite installs in minutes and starts sending data wirelessly to the WeatherLink Console anywhere in your home, school, or business. The outdoor sensor suite is engineered to withstand scorching sun, freezing cold, corrosion and high winds.

Access Real-Time Weather Data Anywhere & Anytime

The included [WeatherLink Console](#) is the easiest & fastest way to see your weather data online.

WeatherLink Console is a fully functional and powerful touch-screen data display, storage, and analysis tool on its own – no Wi-Fi required. Or you can connect to Wi-Fi to join the WeatherLink community and upload and share data safely and securely. View your live data on WeatherLink Cloud and WeatherLink mobile apps for iOS and Android.

Davis Vantage Vue 6242 UK Key Features

- Self-contained, easy-to-install system includes sensor suite, and WeatherLink Console
- Easy installation - rain, wind, temperature & humidity sensors in self-contained sensor suite
- Industry-leading transmission range of 1,000'/300 m from the sensor suite to WeatherLink Console.
- Weather data updates every 2.5 seconds - 10 x faster than the competition!
- Wind tunnel tested to 200mph (321kmph)
- Solar-powered outdoor sensor suite, with battery backup
- Collect data from 80+ sensors from up to 8 transmitters in any combination
- Works with Amazon Alexa and Google Assistant.

Interactive Touchscreen Display

Use the WeatherLink Console's vibrant HD touchscreen to easily navigate, view, and analyse your weather data on one intuitive device.

- Track detailed hourly and daily forecasts for the next 7 days when connected to the WeatherLink Cloud.
- Protect against data loss during power outages with integrated lithium-ion battery.
- Add a second console to your system to view data in multiple rooms.

View up to 21 Parameters

Customise the dashboard to show up to 21 parameters that matter to you, including inside and outside temperature and humidity, barometric pressure, wind speed and direction, rainfall, dewpoint, moon phase, highs and lows, and more.

Alerts When Conditions Change

Get notified about changes in the environmental changes you care about most (such as high wind, freezing temperatures, high rain rate, heat index, and more).

Stream live data directly to the Internet

Connect your WeatherLink Console to WeatherLink Cloud, and use Weatherlink.com or the WeatherLink iOS or Android app to watch wind gusts and direct changes as they occur. (You don't even need a computer or Vantage Pro2/Vantage Vue console!).

Part of Your Smart Home

Connect to Amazon Alexa or Google Assistant to ask for the latest conditions. Also connects to smart irrigation systems.

View And Analyse Historical Insights

Use your full database of historical records stored right on the console to create custom graphs and analyse your data. WeatherLink Console stores years of historical data with settable local archive update rates. This console offers years of data and analysis even without internet connection. (Dependent upon update rate.)

Securely share your data

Share data with friends, family, or co-workers via the WeatherLink website and mobile apps. Upload to a growing list of third-party sites including Weather Underground or CWOP.

Long-range wireless data

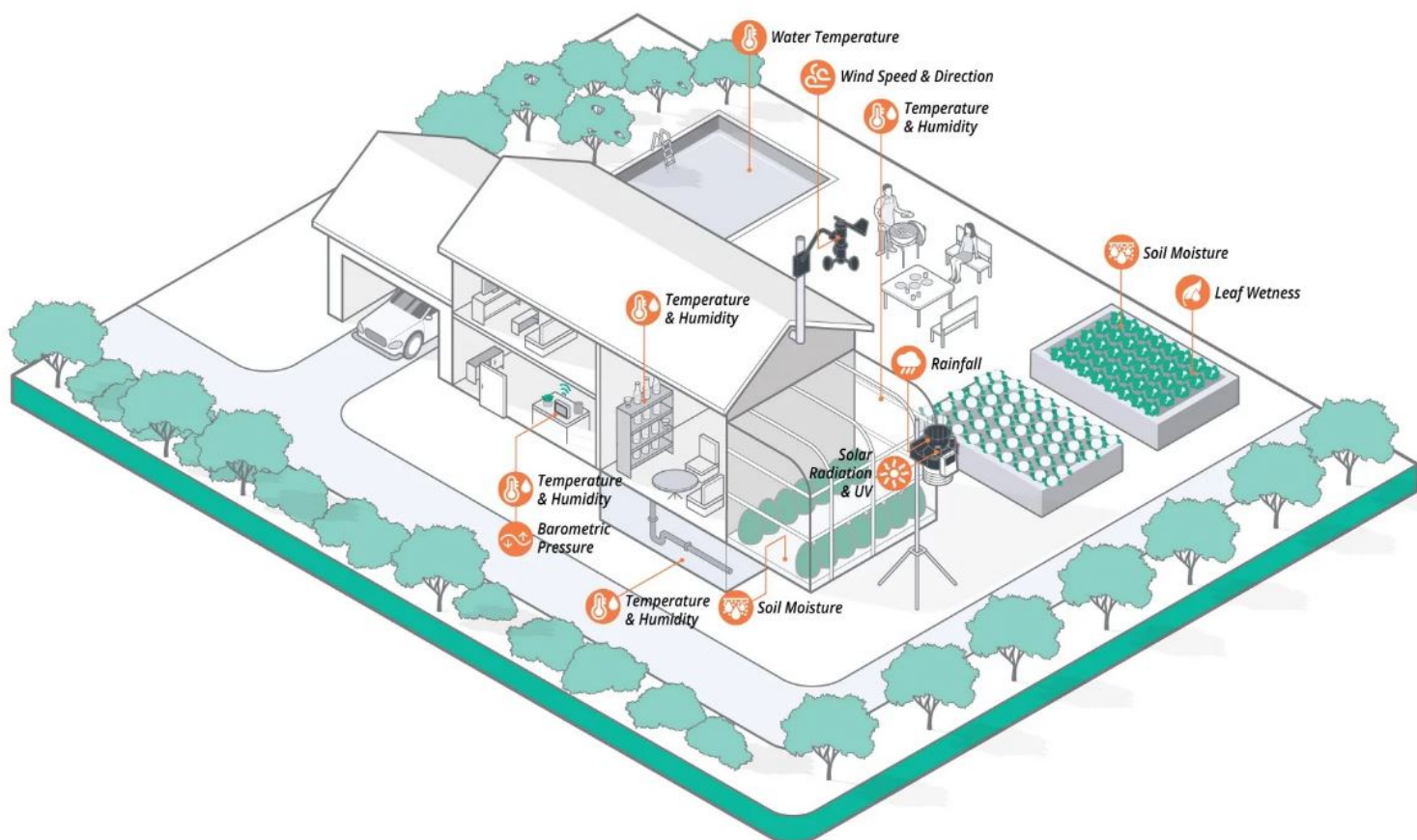
Depend on Davis's industry-leading, proprietary, frequency-hopping, spread spectrum radio to transmit data up to 1,000 ft. (300 m).

Data in Your Pocket

WeatherLink Mobile App brings your data and the Davis WeatherLink Network to your phone. Join the worldwide network of businesses, schools and hobbyists sharing their weather data with the world. WeatherLink lets you see your personal Davis Instruments weather station data and local forecasts, as well as explore other stations from around the world. Enjoy 7-day and hourly forecast, rain, barometer, solar radiation and many more.

Monitor Your Home Environment

Configure a custom network of over 80 sensors on 8 transmitters, so you can see data from sensors in the garden/greenhouse, children's bedrooms, the loft, basement, pool/fish pond, garage, wine cellar – all with one WeatherLink Console.



Sensor Transmitters are the building blocks of your custom network of sensors. They can be positioned indoors or outdoors and are capable of transmitting data up to 1,000 ft. (300 m). Each transmitter can support up to five sensors, including an Anemometer, Rain Collector, Temperature Probe or Temperature & Humidity Sensor, UV Sensor and Solar Radiation Sensor.

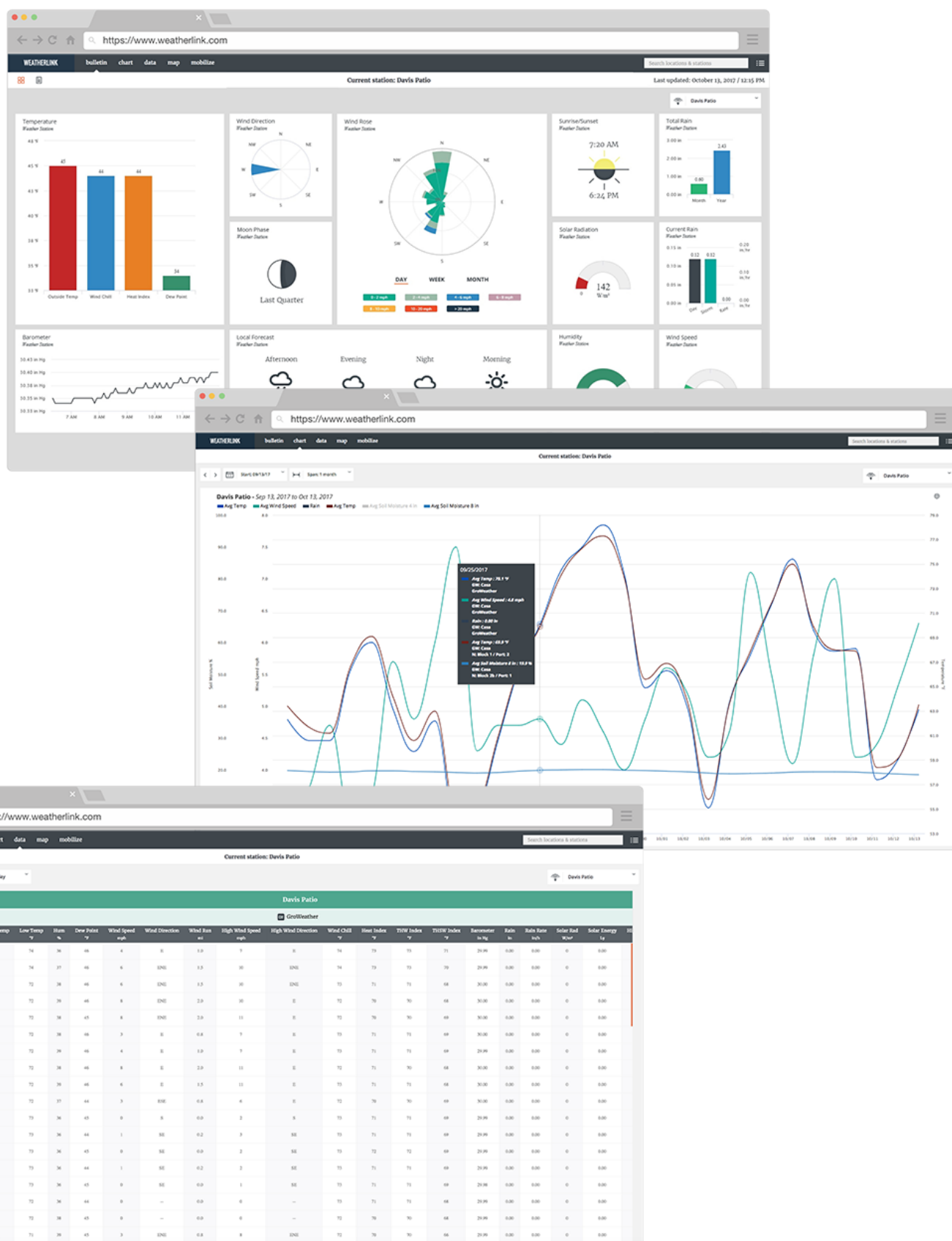
Add any combination of up to eight of the following:

- [Additional Vantage Vue Sensor Suites](#)
- [Vantage Pro2 Sensor Suites](#)
- [Wireless Temperature and Humidity Stations](#)
- [Wireless Temperature Stations](#)
- [Wireless Leaf & Soil Moisture/Temperature Stations](#) (connect up to 10 [sensors](#))
- [Sensor Transmitters](#) (connect up five [sensors](#))

Access Your Real-time Data Anywhere & Anytime

Your personal WeatherLink.com page gives you current condition readings for – Temperature, Humidity, Barometer, Wind Speed, Current Rain, Wind Direction, Total Rain, Rain Rate, Solar Radiation, Wind Rose, Local Forecast, Sunrise/Sunset, Moon Phase.

With **WeatherLink Pro**, you can also store, read and graph your historical data.



Bulletin with Current Conditions

Build and customise your bulletin dashboard to receive current data updates from all of your installed sensors. You can move and resize items to see the data just the way you like it.

Chart (requires Pro or Pro+ subscription)

Visualise any of your sensor data with custom line and bar charts on up to 4 different y-axes. Zoom into an hour of data or out to a full year to view details and trends.

Data (requires Pro or Pro+ subscription)

Access all of your raw sensor data at the click of a button. You can sort by date/time or data type and export any data set directly to an Excel-friendly .csv file.

Map

Use the WeatherLink Map to view and interact with the community of public stations in the worldwide WeatherLink Network. Click on a station to see a summary of current data and click the bulletin to see the station’s customised weather dashboard.

Mobilize (requires Pro or Pro+ subscription)

Use the Davis Mobilize App on iOS or Android to create custom frost, weather, crop and irrigation views for web and mobile. It’s powerful enough to help avoid losing your farm crop to frost, and fun for the data-savvy backyard gardener looking to perfect their tomato crop.

IPM (requires Pro+ subscription)

Access Integrated Pest Management (IPM) on Mobilize to link your weather and sensor data to actual pest risk, giving you a powerful new tool in protecting your crops from pest damage.

Additional Information

Brand	Davis Instruments
Country of Manufacture	United States
Contents	Weather Console display console with power cable Combined outdoor sensor unit and fixings Instruction manuals
Ideal For	Education, Amateur, Interested, Gardeners, Agronomy
Measurements	Barometric Pressure, Dew Point, Humidity, Rainfall, Temperature, Wind Direction, Wind Speed
Typical applications	Environmental (Outdoor), Weather Monitoring
Power	Sensor suite is solar-powered with battery backup. WeatherLink Console is AC-powered with battery backup. UK 230V adapter included (EU 230V supplied to EU orders)
Outdoor Unit	The fully-integrated, corrosion-proof sensor suite (ISS) is built to take all the weather your location can give. The ISS combines a rain collector, temperature/humidity sensors, and anemometer/direction vane into a single unit for optimum performance and durability. The smaller profile sensor suite is designed to minimise visual impact in your garden or on your roof.
Sensors	<ul style="list-style-type: none">• Rain Collector Self-emptying tipping spoon measures rain with 0.2mm resolution.• Anemometer Records wind speeds as low as 2 mph and as high as 150 mph.• Temperature and Humidity Provides outside temperature readings from -40°C to 65°C. Also measures relative humidity from 0 to 100%.• Wind Direction Measures wind direction in compass rose points or degrees.
Dimensions	329 x 146 x 340 mm
Batteries	1 x CR123 lithium back-up battery required for Integrated Sensor Suite (included). Ordinarily this should last 2-3 years.
Power	Solar powered
Installation	The design of the composite outdoor sensor unit makes for an easy install with the included mounting hardware kit. The unit does need to be installed on top of a pole - see Mounting Options above for mounting pole kit and tripod options.

Additional Options

Optional WeatherLink Cloud Pro Subscription	WeatherLink Pro (1 Year Subscription)
	WeatherLink Pro (3 Year Subscription)
Mounting Options	Universal Mounting Pole Kit (WS-7717) (Limited Offer)!
	Universal Crank-shaped Mounting Pole Kit (WS-7715-CRANK)
	Davis Mounting Pole Kit (DI-7717)
	Davis EZ-Mount Tripod (DI-7716-00)